

# EPN3 Antibody



PACO23433

---

## Product Information

**Size:**

100ul

**Reactivity:**

Human

**Source:**

Rabbit

**Isotype:**

IgG

**Applications:**

ELISA, WB, IHC

**Recommended dilutions:**

ELISA:1:2000-1:10000, WB:1:500-1:3000,  
IHC:1:50-1:100

**Protein Background:**

Belongs to the epsin family. 2 isoforms of the human protein are produced by alternative splicing.

**Gene ID:**

EPN3

**Uniprot**

Q9H201

**Synonyms:**

Epsin-3; EPS-15-interacting protein 3;

**Immunogen:**

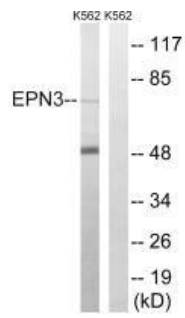
Synthesized peptide derived from internal of human EPN3.

**Storage:**

Rabbit IgG in phosphate buffered saline (without Mg<sup>2+</sup> and Ca<sup>2+</sup>), pH 7.4, 150mM NaCl, 0.02% sodium azide and 50% glycerol.

## Product Images

---



Western blot analysis of extracts from K562 cells, using EPN3 antibody.

Immunohistochemistry analysis of paraffin-embedded human colon carcinoma tissue, using EPN3 antibody.

