

AGBL2 Antibody



PACO23426

Product Information

Size:

100ul

Reactivity:

Human

Source:

Rabbit

Isotype:

IgG

Applications:

ELISA, WB, IHC

Recommended dilutions:

ELISA:1:2000-1:10000, WB:1:500-1:3000,
IHC:1:50-1:100

Protein Background:

Metallocarboxypeptidase involved in the detyrosination of alpha-tubulin C-terminus.

Gene ID:

AGBL2

Uniprot

Q5U5Z8

Synonyms:

Cytosolic carboxypeptidase 2; EC 3.4.17. -; ATP/GTP-binding protein-like 2;

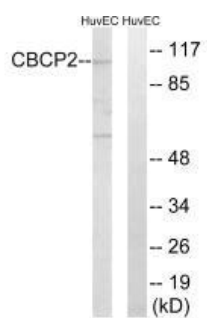
Immunogen:

Synthesized peptide derived from internal of human CBCP2.

Storage:

Rabbit IgG in phosphate buffered saline (without Mg²⁺ and Ca²⁺), pH 7.4, 150mM NaCl, 0.02% sodium azide and 50% glycerol.

Product Images



Western blot analysis of extracts from HuvEc cells, using CBCP2 antibody.

Immunohistochemistry analysis of paraffin-embedded human heart tissue, using CBCP2 antibody.

