

NT5C1A Antibody



PACO23425

Product Information

Size:

100ul

Reactivity:

Human, Mouse

Source:

Rabbit

Isotype:

IgG

Applications:

ELISA, WB, IHC, IF

Recommended dilutions:

ELISA:1:2000-1:10000, WB:1:500-1:3000,
IHC:1:50-1:200, IF:1:100-1:200

Protein Background:

Dephosphorylates the 5' and 2'(3')-phosphates of deoxyribonucleotides and has a broad substrate specificity. Helps to regulate adenosine levels in heart during ischemia and hypoxia.

Gene ID:

NT5C1A

Uniprot

Q9BXI3

Synonyms:

nucleotidase; cytosolic IA; 5NT1A; CN-I; CN-IA

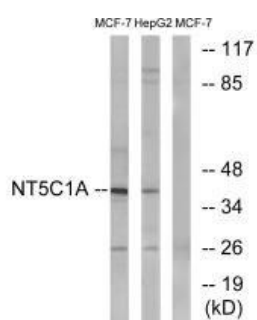
Immunogen:

Synthesized peptide derived from internal of human NT5C1A.

Storage:

Rabbit IgG in phosphate buffered saline (without Mg²⁺ and Ca²⁺), pH 7.4, 150mM NaCl, 0.02% sodium azide and 50% glycerol.

Product Images



Western blot analysis of extracts from MCF-7 cells and HepG2 cells, using NT5C1A antibody.

Immunofluorescence analysis of A549 cells, using NT5C1A antibody.

