

PACO23410

Product Information

Size:

100ul

Reactivity:

Human, Mouse

Source:

Rabbit

Isotype:

IgG

Applications:

ELISA, WB, IHC

Recommended dilutions:

ELISA:1:2000-1:10000, WB:1:500-1:3000,
IHC:1:50-1:100

Protein Background:

May be involved in synaptic functions in the CNS. May play a role in CBLN3 export from the endoplasmic reticulum and secretion By similarity.

Gene ID:

CBLN4

Uniprot

Q9NTU7

Synonyms:

Cerebellin-4 [Precursor]; Cerebellin-like glycoprotein 1; CBLN4; CBLNL1;
UNQ718/PRO1382

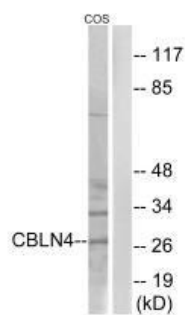
Immunogen:

Synthesized peptide derived from internal of human CBLN4.

Storage:

Rabbit IgG in phosphate buffered saline (without Mg²⁺ and Ca²⁺), pH 7.4, 150mM NaCl, 0.02% sodium azide and 50% glycerol.

Product Images



Western blot analysis of extracts from COS cells, using CBLN4 antibody.

Immunohistochemistry analysis of paraffin-embedded human thymus gland tissue using CBLN4 antibody.

