

PACO23407

Product Information

Size:

100ul

Reactivity:

Human

Source:

Rabbit

Isotype:

IgG

Applications:

ELISA, WB, IHC

Recommended dilutions:

ELISA:1:2000-1:10000, WB:1:500-1:3000,
IHC:1:50-1:100

Protein Background:

Has low NADPH-dependent oxidoreductase activity towards 4-benzoylpyridine and menadione (in vitro).

Gene ID:

CBR3

Uniprot

O75828

Synonyms:

carbonyl reductase 3; EC 1.1.1.184; NADPH-dependent carbonyl reductase 3;

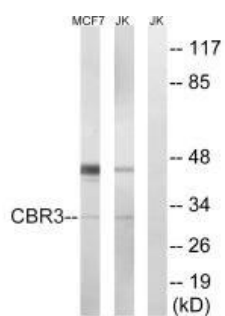
Immunogen:

Synthesized peptide derived from internal of human CBR3.

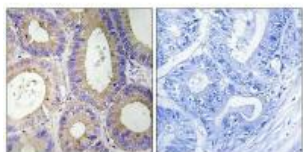
Storage:

Rabbit IgG in phosphate buffered saline (without Mg²⁺ and Ca²⁺), pH 7.4, 150mM NaCl, 0.02% sodium azide and 50% glycerol.

Product Images



Western blot analysis of extracts from MCF7 cells and Jurkat cells, using CBR3 antibody.



Immunohistochemistry analysis of paraffin-embedded human colon carcinoma tissue, using CBR3 antibody.