

CAGE1 Antibody



PACO23401

Product Information

Size:

100ul

Reactivity:

Human

Source:

Rabbit

Isotype:

IgG

Applications:

ELISA, WB, IHC

Recommended dilutions:

ELISA:1:2000-1:10000, WB:1:500-1:3000,
IHC:1:50-1:100

Protein Background:

4 isoforms of the human protein are produced by alternative splicing.

Gene ID:

CAGE1

Uniprot

Q8TC20

Synonyms:

CAGE-1; cancer-associated gene 1; cancer/testis antigen 3; CTAG3;

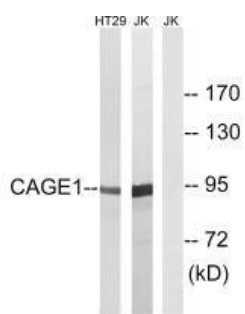
Immunogen:

Synthesized peptide derived from internal of human CAGE1.

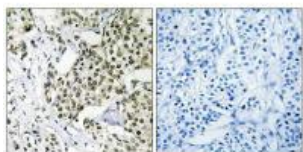
Storage:

Rabbit IgG in phosphate buffered saline (without Mg²⁺ and Ca²⁺), pH 7.4, 150mM NaCl, 0.02% sodium azide and 50% glycerol.

Product Images



Western blot analysis of extracts from HT-29 cells and Jurkat cells, using CAGE1 antibody.



Immunohistochemistry analysis of paraffin-embedded human breast carcinoma tissue using CAGE1 antibody.