

ARPP21 Antibody



PACO23400

Product Information

Size:

100ul

Reactivity:

Human

Source:

Rabbit

Isotype:

IgG

Applications:

ELISA, WB, IHC

Recommended dilutions:

ELISA:1:2000-1:10000, WB:1:500-1:3000,
IHC:1:50-1:100

Protein Background:

Isoform 2 may act as a competitive inhibitor of calmodulin-dependent enzymes such as calcineurin in neurons By similarity.

Gene ID:

ARPP21

Uniprot

Q9UBL0

Synonyms:

cAMP-regulated phosphoprotein 21; ARPP-21; Thymocyte cAMP-regulated phosphoprotein;

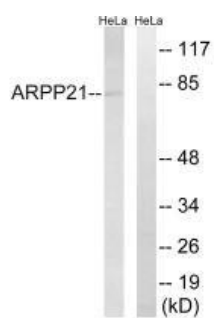
Immunogen:

Synthesized peptide derived from internal of human ARPP21.

Storage:

Rabbit IgG in phosphate buffered saline (without Mg²⁺ and Ca²⁺), pH 7.4, 150mM NaCl, 0.02% sodium azide and 50% glycerol.

Product Images



Western blot analysis of extracts from HeLa cells, using ARPP21 antibody.

Immunohistochemistry analysis of paraffin-embedded human heart tissue, using ARPP21 antibody.

