

PACO23396

---

## Product Information

**Size:**

100ul

**Reactivity:**

Human

**Source:**

Rabbit

**Isotype:**

IgG

**Applications:**

ELISA, WB, IHC

**Recommended dilutions:**

ELISA:1:2000-1:10000, WB:1:500-1:3000,  
IHC:1:50-1:100

**Protein Background:**

A chromosomal aberration involving BCAS4 has been found in some breast carcinoma cell lines. Translocation t(17;20)(q23; q13) with BCAS3. Belongs to the cappuccino family. 3 isoforms of the human protein are produced by alternative splicing. Note: This description may include information from UniProtKB.

**Gene ID:**

BCAS4

**Uniprot**

Q8TDM0

**Synonyms:**

Breast carcinoma-amplified sequence 4; BCAS4;

**Immunogen:**

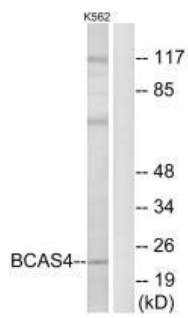
Synthesized peptide derived from internal of human BCAS4.

**Storage:**

Rabbit IgG in phosphate buffered saline (without Mg<sup>2+</sup> and Ca<sup>2+</sup>), pH 7.4, 150mM NaCl, 0.02% sodium azide and 50% glycerol.

## Product Images

---



Western blot analysis of extracts from K562 cells, using BCAS4 antibody.

Immunohistochemistry analysis of paraffin-embedded human tonsil tissue using BCAS4 antibody.

