

HGH1 Antibody



PACO23395

Product Information

Size:

100ul

Reactivity:

Human

Source:

Rabbit

Isotype:

IgG

Applications:

ELISA, WB, IHC

Recommended dilutions:

ELISA:1:2000-1:10000, WB:1:500-1:3000,
IHC:1:50-1:100

Protein Background:

Belongs to the FAM203 family.

Gene ID:

HGH1

Uniprot

Q9BTY7

Synonyms:

Brain protein 16;

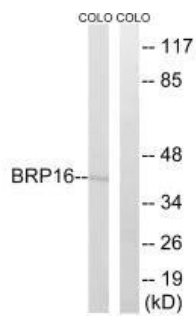
Immunogen:

Synthesized peptide derived from internal of human BRP16.

Storage:

Rabbit IgG in phosphate buffered saline (without Mg²⁺ and Ca²⁺), pH 7.4, 150mM NaCl, 0.02% sodium azide and 50% glycerol.

Product Images



Western blot analysis of extracts from COLO cells, using BRP16 antibody.

Immunohistochemistry analysis of paraffin-embedded human lung carcinoma tissue, using BRP16 antibody.

