

# ARMC6 Antibody



PACO23384

---

## Product Information

**Size:**

100ul

**Reactivity:**

Human, Mouse, Rat

**Source:**

Rabbit

**Isotype:**

IgG

**Applications:**

ELISA, WB, IF

**Recommended dilutions:**

ELISA:1:2000-1:10000, WB:1:500-1:3000,  
IF:1:100-1:500

**Protein Background:**

The function of this gene's protein product has not been determined. A related protein in mouse suggests that this protein has a conserved function. Two transcript variants encoding different isoforms have been found for this gene.

**Gene ID:**

ARMC6

**Uniprot**

Q6NXE6

**Synonyms:**

armadillo repeat containing 6;

**Immunogen:**

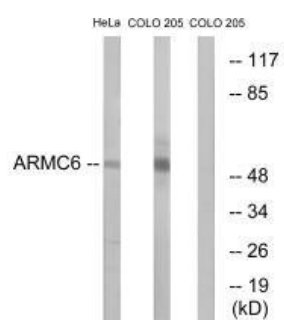
Synthesized peptide derived from internal of human ARMC6.

**Storage:**

Rabbit IgG in phosphate buffered saline (without Mg<sup>2+</sup> and Ca<sup>2+</sup>), pH 7.4, 150mM NaCl, 0.02% sodium azide and 50% glycerol.

## Product Images

---



Western blot analysis of extracts from HeLa cells and COLO cells, using ARMC6 antibody.

Immunofluorescence analysis of A549 cells, using ARMC6 antibody.

