

ARFIP1 Antibody



PACO23383

Product Information

Size:

100ul

Reactivity:

Human, Mouse, Rat

Source:

Rabbit

Isotype:

IgG

Applications:

ELISA, WB, IF

Recommended dilutions:

ELISA:1:2000-1:10000, WB:1:500-1:3000,
IF:1:100-1:500

Protein Background:

Putative target protein of ADP-ribosylation factor.

Gene ID:

ARFIP1

Uniprot

P53367

Synonyms:

ADP-ribosylation factor interacting 1; arfaptin-1; ARFP1;

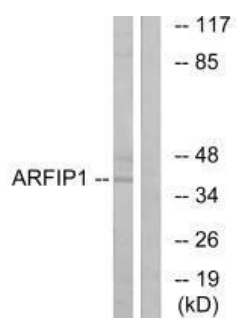
Immunogen:

Synthesized peptide derived from internal of human ARFIP1.

Storage:

Rabbit IgG in phosphate buffered saline (without Mg²⁺ and Ca²⁺), pH 7.4, 150mM NaCl, 0.02% sodium azide and 50% glycerol.

Product Images



Western blot analysis of extracts from Jurkat cells, using ARFIP1 antibody.

Immunofluorescence analysis of A549 cells, using ARFIP1 antibody.

