

# RPL3 Antibody



PACO23366

---

## Product Information

**Size:**

100ul

**Reactivity:**

Human, Mouse, Rat

**Source:**

Rabbit

**Isotype:**

IgG

**Applications:**

ELISA, WB, IHC

**Recommended dilutions:**

ELISA:1:2000-1:10000, WB:1:500-1:3000,  
IHC:1:50-1:100

**Protein Background:**

The L3 protein is a component of the large subunit of cytoplasmic ribosomes.

**Gene ID:**

RPL3

**Uniprot**

P39023

**Synonyms:**

60S ribosomal protein L3; HIV-1 TAR RNA binding protein B; RL3; RPL3; TARBP-B

**Immunogen:**

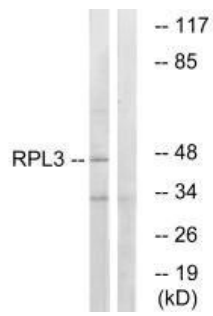
Synthesized peptide derived from internal of human RPL3.

**Storage:**

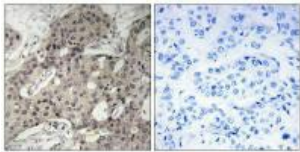
Rabbit IgG in phosphate buffered saline (without Mg<sup>2+</sup> and Ca<sup>2+</sup>), pH 7.4, 150mM NaCl, 0.02% sodium azide and 50% glycerol.

## Product Images

---



Western blot analysis of extracts from HT-29 cells, using RPL3 antibody.



Immunohistochemistry analysis of paraffin-embedded human breast carcinoma tissue using RPL3 antibody.