

Product Information

Size:

100ul

Reactivity:

Human, Mouse

Source:

Rabbit

Isotype:

IgG

Applications:

ELISA, IHC, IF

Recommended dilutions:

ELISA:1:2000-1:10000, IHC:1:50-1:100,
IF:1:100-1:500

Protein Background:

Binding to cells via a high affinity receptor, laminin is thought to mediate the attachment, migration and organization of cells into tissues during embryonic development by interacting with other extracellular matrix components.

Gene ID:

LAMA2

Uniprot

P24043

Synonyms:

LAMM; laminin M; laminin alpha-2; merosin heavy chain;

Immunogen:

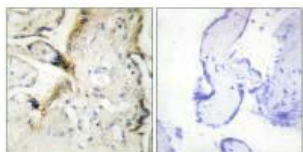
Synthesized peptide derived from internal of human LAMA2.

Storage:

Rabbit IgG in phosphate buffered saline (without Mg²⁺ and Ca²⁺), pH 7.4, 150mM NaCl, 0.02% sodium azide and 50% glycerol.

Product Images

Immunohistochemistry analysis of paraffin-embedded human placenta tissue using LAMA2 antibody.



Immunofluorescence analysis of NIH/3T3 cells, using LAMA2 antibody.

