

Product Information

Size:

100ul

Reactivity:

Human

Source:

Rabbit

Isotype:

IgG

Applications:

ELISA, WB, IF

Recommended dilutions:

ELISA:1:2000-1:10000, WB:1:500-1:3000,
IF:1:100-1:500

Protein Background:

Cytotoxic chymotrypsin-like serine protease with preference for bulky and aromatic residues at the P1 position and acidic residues at the P3' and P4' sites. Probably necessary for target cell lysis in cell-mediated immune responses. Participates in the antiviral response via direct cleavage of several proteins essential for viral replication.

Gene ID:

GZMH

Uniprot

P20718

Synonyms:

Granzyme H [Precursor]; EC 3.4.21. -; Cytotoxic T-lymphocyte proteinase; Cathepsin G-like 2; CTSL2

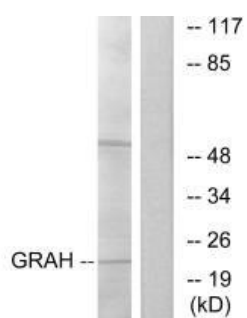
Immunogen:

Synthesized peptide derived from internal of human GRAH.

Storage:

Rabbit IgG in phosphate buffered saline (without Mg²⁺ and Ca²⁺), pH 7.4, 150mM NaCl, 0.02% sodium azide and 50% glycerol.

Product Images



Western blot analysis of extracts from K562 cells, using GRAH antibody.

Immunofluorescence analysis of A549 cells, using GRAH antibody.

