

PACO23322

---

## Product Information

**Size:**

100ul

**Reactivity:**

Human

**Source:**

Rabbit

**Isotype:**

IgG

**Applications:**

ELISA, WB, IHC

**Recommended dilutions:**

ELISA:1:2000-1:10000, WB:1:500-1:3000,  
IHC:1:50-1:100

**Protein Background:**

This protein is one of the nuclear-coded polypeptide chains of cytochrome c oxidase, the terminal oxidase in mitochondrial electron transport.

**Gene ID:**

COX4I1

**Uniprot**

P13073

**Synonyms:**

COX IV-1; COX4; COXIV; EC 1.9.3.1; cytochrome c oxidase polypeptide IV

**Immunogen:**

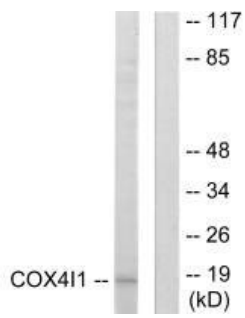
Synthesized peptide derived from N-terminal of human COX41.

**Storage:**

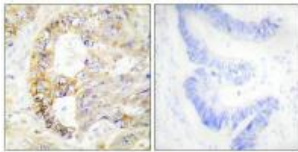
Rabbit IgG in phosphate buffered saline (without Mg<sup>2+</sup> and Ca<sup>2+</sup>), pH 7.4, 150mM NaCl, 0.02% sodium azide and 50% glycerol.

## Product Images

---



Western blot analysis of extracts from A549 cells, using COX41 antibody.



Immunohistochemistry analysis of paraffin-embedded human colon carcinoma tissue using COX41 antibody.