

PACO23321

---

## Product Information

**Size:**

100ul

**Reactivity:**

Human

**Source:**

Rabbit

**Isotype:**

IgG

**Applications:**

ELISA, IHC, IF

**Recommended dilutions:**

ELISA:1:2000-1:10000, IHC:1:50-1:100,  
IF:1:100-1:500

**Protein Background:**

May act as a cross-bridge between fibrils and other extracellular matrix molecules. Involved in skeletal myogenesis in the developing esophagus. May play a role in organization of the pericellular matrix or the sphinteric smooth muscle.

**Gene ID:**

COL19A1

**Uniprot**

Q14993

**Synonyms:**

Collagen alpha-1(XIX) chain; Collagen alpha-1(Y) chain; COJA1;

**Immunogen:**

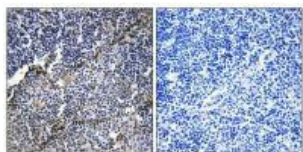
Synthesized peptide derived from internal of human Collagen XIX alpha 1.

**Storage:**

Rabbit IgG in phosphate buffered saline (without Mg<sup>2+</sup> and Ca<sup>2+</sup>), pH 7.4, 150mM NaCl, 0.02% sodium azide and 50% glycerol.

## Product Images

---



Immunohistochemistry analysis of paraffin-embedded human thymus gland tissue using Collagen XIX alpha 1 antibody.



Immunofluorescence analysis of A549 cells, using Collagen XIX alpha 1 antibody.