

PACO23312

Product Information

Size:

100ul

Reactivity:

Human, Mouse

Source:

Rabbit

Isotype:

IgG

Applications:

ELISA, IHC, IF

Recommended dilutions:

ELISA:1:2000-1:10000, IHC:1:50-1:100,
IF:1:100-1:500

Protein Background:

Type IV collagen is the major structural component of glomerular basement membranes (GBM), forming a 'chicken-wire' meshwork together with laminins, proteoglycans and entactin/nidogen.

Gene ID:

COL4A5

Uniprot

P29400

Synonyms:

Collagen alpha-5(IV) chain ; CO4A5;

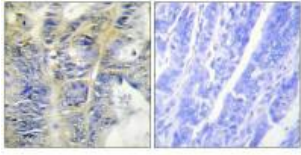
Immunogen:

Synthesized peptide derived from internal of human Collagen IV alpha 5.

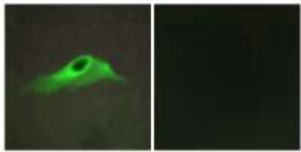
Storage:

Rabbit IgG in phosphate buffered saline (without Mg²⁺ and Ca²⁺), pH 7.4, 150mM NaCl, 0.02% sodium azide and 50% glycerol.

Product Images



Immunohistochemistry analysis of paraffin-embedded human colon carcinoma tissue using Collagen IV alpha 5 antibody.



Immunofluorescence analysis of HeLa cells, using Collagen IV alpha 5 antibody.