

PACO23311

Product Information

Size:

100ul

Reactivity:

Human

Source:

Rabbit

Isotype:

IgG

Applications:

ELISA, IHC, IF

Recommended dilutions:

ELISA:1:2000-1:10000, IHC:1:50-1:100,
IF:1:100-1:500

Protein Background:

Receptor that may have an important role in cell/cell signaling during nervous system formation.

Gene ID:

CELSR3

Uniprot

Q9NYQ7

Synonyms:

Cadherin EGF LAG seven-pass G-type receptor 3 ; Flamingo homolog 1; hFmi1; Multiple epidermal growth factor-like domains 2; Epidermal growth factor-like 1

Immunogen:

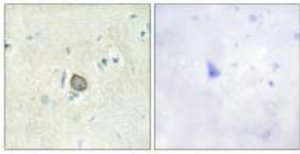
Synthesized peptide derived from internal of human CELSR3.

Storage:

Rabbit IgG in phosphate buffered saline (without Mg²⁺ and Ca²⁺), pH 7.4, 150mM NaCl, 0.02% sodium azide and 50% glycerol.

Product Images

Immunohistochemistry analysis of paraffin-embedded human brain tissue using CELSR3 antibody.



Immunofluorescence analysis of HepG2 cells, using CELSR3 antibody.

