

PACO23310

---

## Product Information

**Size:**

100ul

**Reactivity:**

Human, Mouse

**Source:**

Rabbit

**Isotype:**

IgG

**Applications:**

ELISA, IHC, IF

**Recommended dilutions:**

ELISA:1:2000-1:10000, IHC:1:50-1:100,  
IF:1:100-1:500

**Protein Background:**

May participate in the regulation of cell proliferation through the E2F/RB pathway. May be involved in molecular regulation of hematopoietic stem cells and progenitor cell lineage commitment and differentiation By similarity.

**Gene ID:**

CDCA4

**Uniprot**

Q9BXL8

**Synonyms:**

Cell division cycle-associated protein 4; Hematopoietic progenitor protein; HEPP;

**Immunogen:**

Synthesized peptide derived from internal of human CDCA4.

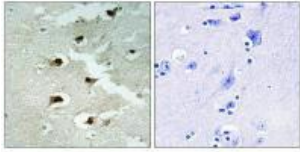
**Storage:**

Rabbit IgG in phosphate buffered saline (without Mg<sup>2+</sup> and Ca<sup>2+</sup>), pH 7.4, 150mM NaCl, 0.02% sodium azide and 50% glycerol.

## Product Images

---

Immunohistochemistry analysis of paraffin-embedded human brain tissue using CDCA4 antibody.



Immunofluorescence analysis of HepG2 cells, using CDCA4 antibody.

