

CD302 Antibody



PACO23309

Product Information

Size:

100ul

Reactivity:

Human, Mouse, Rat

Source:

Rabbit

Isotype:

IgG

Applications:

ELISA, WB, IHC

Recommended dilutions:

ELISA:1:2000-1:10000, WB:1:500-1:3000,
IHC:1:50-1:100

Protein Background:

Potential multifunctional C-type lectin receptor that may play roles in endocytosis and phagocytosis as well as in cell adhesion and migration.

Gene ID:

CD302

Uniprot

Q8IX05

Synonyms:

CD302 antigen [Precursor]; C-type lectin domain family 13 member A; C-type lectin BIMLEC; Type I transmembrane C-type lectin receptor DCL-1; CD302

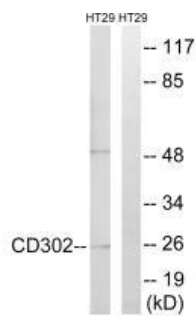
Immunogen:

Synthesized peptide derived from internal of human CD302.

Storage:

Rabbit IgG in phosphate buffered saline (without Mg²⁺ and Ca²⁺), pH 7.4, 150mM NaCl, 0.02% sodium azide and 50% glycerol.

Product Images



Western blot analysis of extracts from HT-29 cells, using CD302 antibody.

Immunohistochemistry analysis of paraffin-embedded human lymph node tissue using CD302 antibody.

