

CABLES2 Antibody



PACO23307

Product Information

Size:

100ul

Reactivity:

Human, Mouse

Source:

Rabbit

Isotype:

IgG

Applications:

ELISA, WB, IF

Recommended dilutions:

ELISA:1:2000-1:10000, WB:1:500-1:3000,
IF:1:100-1:500

Protein Background:

Unknown. Probably involved in G1-S cell cycle transition.

Gene ID:

CABLES2

Uniprot

Q9BTV7

Synonyms:

CDK5 and ABL1 enzyme substrate 2; Interactor with CDK3 2; Ik3-2; CABLES2; C20orf150

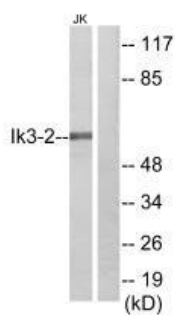
Immunogen:

Synthesized peptide derived from internal of human Ik3-2.

Storage:

Rabbit IgG in phosphate buffered saline (without Mg²⁺ and Ca²⁺), pH 7.4, 150mM NaCl, 0.02% sodium azide and 50% glycerol.

Product Images



Western blot analysis of extracts from Jurkat cells, using Ik3-2 antibody.

Immunofluorescence analysis of A549 cells, using Ik3-2 antibody.

