

STARD13 Antibody



PACO23298

Product Information

Size:

100ul

Reactivity:

Human

Source:

Rabbit

Isotype:

IgG

Applications:

ELISA, WB, IF

Recommended dilutions:

ELISA:1:2000-1:10000, WB:1:500-1:3000,
IF:1:100-1:500

Protein Background:

GTPase-activating protein for RhoA, and perhaps for Cdc42. May be involved in regulation of cytoskeletal reorganization, cell proliferation and cell motility. Acts a tumor suppressor in hepatocellular carcinoma cells.

Gene ID:

STARD13

Uniprot

Q9Y3M8

Synonyms:

STA13; START domain containing 13; START domain- containing protein 13; StAR-related lipid transfer protein 13; deleted in liver cancer 2

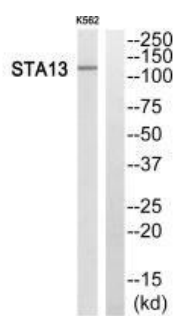
Immunogen:

Synthesized peptide derived from N-terminal of human STA13.

Storage:

Rabbit IgG in phosphate buffered saline (without Mg²⁺ and Ca²⁺), pH 7.4, 150mM NaCl, 0.02% sodium azide and 50% glycerol.

Product Images



Western blot analysis of extracts from K562 cells, using STA13 antibody.

Immunofluorescence analysis of A549 cells, using STA13 antibody.

