

## Product Information

**Size:**

100ul

**Reactivity:**

Human, Mouse

**Source:**

Rabbit

**Isotype:**

IgG

**Applications:**

ELISA, WB, IHC

**Recommended dilutions:**

ELISA:1:2000-1:10000, WB:1:500-1:3000,  
IHC:1:50-1:100

**Protein Background:**

Dihydrouridine synthase. Catalyzes the synthesis of dihydrouridine, a modified base found in the D-loop of most tRNAs. Negatively regulates the activation of EIF2AK2/PKR.

**Gene ID:**

DUS2

**Uniprot**

Q9NX74

**Synonyms:**

tRNA-dihydrouridine synthase 2-like; EC 1. -. -. -; hDUS2; Up-regulated in lung cancer; URLC8

**Immunogen:**

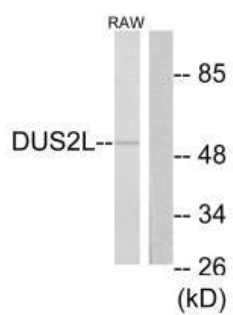
Synthesized peptide derived from C-terminal of human DUS2L.

**Storage:**

Rabbit IgG in phosphate buffered saline (without Mg<sup>2+</sup> and Ca<sup>2+</sup>), pH 7.4, 150mM NaCl, 0.02% sodium azide and 50% glycerol.

## Product Images

---



Western blot analysis of extracts from RAW264.7 cells, using DUS2L antibody.

Immunohistochemistry analysis of paraffin-embedded human skeletal muscle using DUS2L antibody.

