

AKIP1 Antibody



PACO23285

Product Information

Size:

100ul

Reactivity:

Human

Source:

Rabbit

Isotype:

IgG

Applications:

ELISA, WB, IHC

Recommended dilutions:

ELISA:1:2000-1:10000, WB:1:500-1:3000,
IHC:1:50-1:100

Protein Background:

Enhances NF-kappa-B transcriptional activity by regulating the nuclear localization of the NF-kappa-B subunit RELA and promoting the phosphorylation of RELA by PRKACA. Regulates the effect of the cAMP-dependent protein kinase signaling pathway on the NF-kappa-B activation cascade.

Gene ID:

AKIP1

Uniprot

Q9NQ31

Synonyms:

Breast cancer-associated gene 3 protein; PKA-interacting protein; AKIP1;

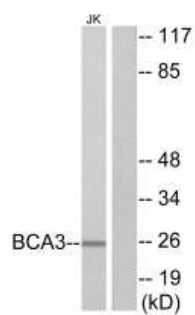
Immunogen:

Synthesized peptide derived from internal of human BCA3.

Storage:

Rabbit IgG in phosphate buffered saline (without Mg²⁺ and Ca²⁺), pH 7.4, 150mM NaCl, 0.02% sodium azide and 50% glycerol.

Product Images



Western blot analysis of extracts from Jurkat cells, using BCA3 antibody.

Immunohistochemistry analysis of paraffin-embedded human heart tissue using BCA3 antibody.

