

# PKIB Antibody



PACO23281

---

## Product Information

**Size:**

100ul

**Reactivity:**

Human, Mouse

**Source:**

Rabbit

**Isotype:**

IgG

**Applications:**

ELISA, IHC, IF

**Recommended dilutions:**

ELISA:1:2000-1:10000, IHC:1:50-1:100,  
IF:1:100-1:500

**Protein Background:**

Extremely potent competitive inhibitor of cAMP-dependent protein kinase activity, this protein interacts with the catalytic subunit of the enzyme after the cAMP-induced dissociation of its regulatory chains By similarity.

**Gene ID:**

PKIB

**Uniprot**

Q9C010

**Synonyms:**

PKI-beta; cAMP-dependent protein kinase inhibitor beta; PKIB; PRKACN2;

**Immunogen:**

Synthesized peptide derived from internal of human IPKB.

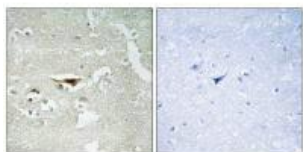
**Storage:**

Rabbit IgG in phosphate buffered saline (without Mg<sup>2+</sup> and Ca<sup>2+</sup>), pH 7.4, 150mM NaCl, 0.02% sodium azide and 50% glycerol.

## Product Images

---

Immunohistochemistry analysis of paraffin-embedded human brain tissue, using IPKB antibody.



Immunofluorescence analysis of MCF-7 cells, using IPKB antibody.

