

Product Information

Size:

100ul

Reactivity:

Human, Mouse

Source:

Rabbit

Isotype:

IgG

Applications:

ELISA, WB, IF

Recommended dilutions:

ELISA:1:2000-1:10000, WB:1:500-1:3000,
IF:1:100-1:500

Protein Background:

This gene encodes a mitogen-activated protein kinase phosphatase that is a member of the dual specificity protein phosphatase subfamily. These phosphatases inactivate their target kinases by dephosphorylating both the phosphoserine/threonine and phosphotyrosine residues. The encoded protein specifically regulates the c-Jun amino-terminal kinase (JNK) and extracellular signal-regulated kinase (ERK) pathways.

Gene ID:

DUSP16

Uniprot

Q9BYG9

Synonyms:

Dual specificity protein phosphatase 16; EC 3.1.3.48; EC 3.1.3.16; Mitogen-activated protein kinase phosphatase 7; MAP kinase phosphatase 7

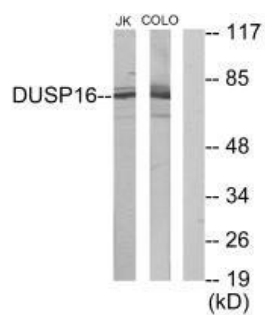
Immunogen:

Synthesized peptide derived from internal of human DUSP16.

Storage:

Rabbit IgG in phosphate buffered saline (without Mg²⁺ and Ca²⁺), pH 7.4, 150mM NaCl, 0.02% sodium azide and 50% glycerol.

Product Images



Western blot analysis of extracts from Jurkat cells and COLO205 cells, using DUSP16 antibody.

Immunofluorescence analysis of HepG2 cells, using DUSP16 antibody.

