

# BTBD6 Antibody



PACO23277

---

## Product Information

**Size:**

100ul

**Reactivity:**

Human, Mouse

**Source:**

Rabbit

**Isotype:**

IgG

**Applications:**

ELISA, WB, IHC

**Recommended dilutions:**

ELISA:1:2000-1:10000, WB:1:500-1:3000,  
IHC:1:50-1:100

**Protein Background:**

Adapter protein for the CUL3 E3 ubiquitin-protein ligase complex. Involved in late neuronal development and muscle formation By similarity.

**Gene ID:**

BTBD6

**Uniprot**

Q96KE9

**Synonyms:**

Lens BTB domain protein; BTB/POZ domain-containing protein 6; BTBD6; BDPL;

**Immunogen:**

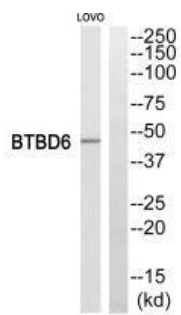
Synthesized peptide derived from interf human BTBD6.

**Storage:**

Rabbit IgG in phosphate buffered saline (without Mg<sup>2+</sup> and Ca<sup>2+</sup>), pH 7.4, 150mM NaCl, 0.02% sodium azide and 50% glycerol.

## Product Images

---



Western blot analysis of extracts from LOVO cells, using BTBD6 antibody.

Immunohistochemistry analysis of paraffin-embedded human breast carcinoma tissue, using BTBD6 antibody.

