

TUSC5 Antibody



PACO23262

Product Information

Size:

100ul

Reactivity:

Human

Source:

Rabbit

Isotype:

IgG

Applications:

ELISA, WB, IF

Recommended dilutions:

ELISA:1:2000-1:10000, WB:1:500-1:3000,
IF:1:100-1:500

Protein Background:

May be involved in fat metabolism By similarity.

Gene ID:

TUSC5

Uniprot

Q8IXB3

Synonyms:

Tumor suppressor candidate 5; Protein located at seventeen-p-thirteen point three 1; TUSC5; LOST1;

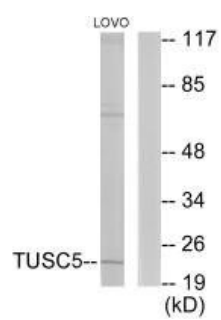
Immunogen:

Synthesized peptide derived from internal of human TUSC5.

Storage:

Rabbit IgG in phosphate buffered saline (without Mg²⁺ and Ca²⁺), pH 7.4, 150mM NaCl, 0.02% sodium azide and 50% glycerol.

Product Images



Western blot analysis of extracts from LOVO cells, using TUSC5 antibody.

Immunofluorescence analysis of HeLa cells, using TUSC5 antibody.

