

# BPIFA4P Antibody



PACO23261

---

## Product Information

**Size:**

100ul

**Reactivity:**

Human

**Source:**

Rabbit

**Isotype:**

IgG

**Applications:**

ELISA, IHC, IF

**Recommended dilutions:**

ELISA:1:2000-1:10000, IHC:1:50-1:100,  
IF:1:100-1:500

**Protein Background:**

Major protein in sweat, has surfactant properties By similarity.

**Gene ID:**

BPIFA4P

**Uniprot**

Q86YQ2

**Synonyms:**

Latherin ; Breast cancer and salivary gland-expressed protein; LATH; BASE;

**Immunogen:**

Synthesized peptide derived from internal of human LATH.

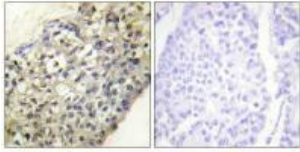
**Storage:**

Rabbit IgG in phosphate buffered saline (without Mg<sup>2+</sup> and Ca<sup>2+</sup>), pH 7.4, 150mM NaCl, 0.02% sodium azide and 50% glycerol.

## Product Images

---

Immunohistochemistry analysis of paraffin-embedded human breast carcinoma tissue, using LATH antibody.



Immunofluorescence analysis of HeLa cells, using LATH antibody.

