

### Product Information

**Size:**

100ul

**Reactivity:**

Human, Mouse

**Source:**

Rabbit

**Isotype:**

IgG

**Applications:**

ELISA, IHC, IF

**Recommended dilutions:**

ELISA:1:2000-1:10000, IHC:1:50-1:100,  
IF:1:100-1:500

**Protein Background:**

Phosphorylates diacylglycerol (DAG) to generate phosphatidic acid (PA). Plays a key role in promoting cell growth. Activates the Ras/B-Raf/C-Raf/MEK/ERK signaling pathway induced by EGF. Regulates the recruitment of RAF1 and BRAF from cytoplasm to membranes and their heterodimerization.

**Gene ID:**

DGKH

**Uniprot**

Q86XP1

**Synonyms:**

diacylglycerol kinase eta; EC 2.7.1.107; Diglyceride kinase eta; DGK-eta; DAG kinase eta

**Immunogen:**

Synthesized peptide derived from internal of human DGKH.

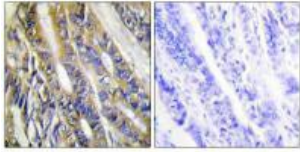
**Storage:**

Rabbit IgG in phosphate buffered saline (without Mg<sup>2+</sup> and Ca<sup>2+</sup>), pH 7.4, 150mM NaCl, 0.02% sodium azide and 50% glycerol.

## Product Images

---

Immunohistochemistry analysis of paraffin-embedded human colon carcinoma tissue, using DGKH antibody.



Immunofluorescence analysis of HeLa cells, using DGKH antibody.

