

MAPKAPK3 Antibody



PACO23252

Product Information

Size:

100ul

Reactivity:

Human, Mouse, Rat

Source:

Rabbit

Isotype:

IgG

Applications:

ELISA, WB, IHC

Recommended dilutions:

ELISA:1:2000-1:10000, WB:1:500-1:3000,
IHC:1:50-1:100

Protein Background:**Gene ID:**

MAPKAPK3

Uniprot

Q16644

Synonyms:

MAP kinase-activated protein kinase 3; EC 2.7.11.1; MAPK-activated protein kinase 3; MAPKAP kinase 3; MAPKAPK-3

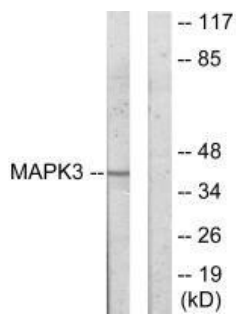
Immunogen:

Synthesized peptide derived from internal of human MAPK3.

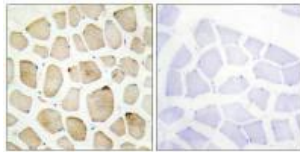
Storage:

Rabbit IgG in phosphate buffered saline (without Mg²⁺ and Ca²⁺), pH 7.4, 150mM NaCl, 0.02% sodium azide and 50% glycerol.

Product Images



Western blot analysis of extracts from COLO205 cells, using MAPK3 antibody.



Immunohistochemistry analysis of paraffin-embedded human skeletal muscle tissue using MAPK3 antibody.