

PACO23246

Product Information

Size:

100ul

Reactivity:

Human, Mouse

Source:

Rabbit

Isotype:

IgG

Applications:

ELISA, IHC, IF

Recommended dilutions:

ELISA:1:2000-1:10000, IHC:1:50-1:100,
IF:1:100-1:500

Protein Background:

Component of the histone deacetylase NuRD complex which participates in the remodeling of chromatin by deacetylating histones.

Gene ID:

CHD4

Uniprot

Q14839

Synonyms:

EC 3.6.1. -; ATP-dependent helicase CHD4; CHD-4; Mi-2 autoantigen 218 kDa protein; Mi2-beta

Immunogen:

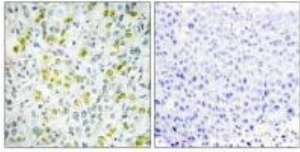
Synthesized peptide derived from internal of human CHD4.

Storage:

Rabbit IgG in phosphate buffered saline (without Mg²⁺ and Ca²⁺), pH 7.4, 150mM NaCl, 0.02% sodium azide and 50% glycerol.

Product Images

Immunohistochemistry analysis of paraffin-embedded human liver carcinoma tissue, using CHD4 antibody.



Immunofluorescence analysis of HepG2 cells, using CHD4 antibody.

