

SERINC3 Antibody



PACO23243

Product Information

Size:

100ul

Reactivity:

Human, Mouse, Rat

Source:

Rabbit

Isotype:

IgG

Applications:

ELISA, WB, IF

Recommended dilutions:

ELISA:1:2000-1:10000, WB:1:500-1:3000,
IF:1:100-1:500

Protein Background:

May be involved in cellular transformation.

Gene ID:

SERINC3

Uniprot

Q13530

Synonyms:

Serine incorporator 3; Tumor differentially expressed protein 1; SERINC3; DIFF33; TDE1

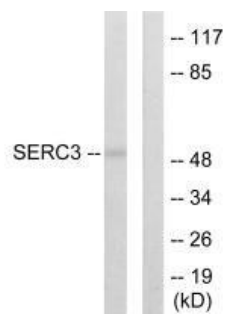
Immunogen:

Synthesized peptide derived from C-terminal of human SERC3.

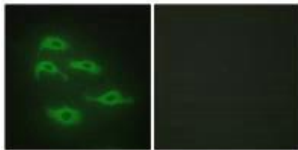
Storage:

Rabbit IgG in phosphate buffered saline (without Mg²⁺ and Ca²⁺), pH 7.4, 150mM NaCl, 0.02% sodium azide and 50% glycerol.

Product Images



Western blot analysis of extracts from 293 cells, using SERC3 antibody.



Immunofluorescence analysis of HepG2 cells, using SERC3 antibody.