

PACO23237

---

## Product Information

**Size:**

100ul

**Reactivity:**

Human, Mouse

**Source:**

Rabbit

**Isotype:**

IgG

**Applications:**

ELISA, WB, IF

**Recommended dilutions:**

ELISA:1:2000-1:10000, WB:1:500-1:3000,  
IF:1:100-1:500

**Protein Background:**

Binds to the catalytic subunit of the cyclin dependent kinases and is essential for their biological function.

**Gene ID:**

CKS1B

**Uniprot**

P61024

**Synonyms:**

CKS-1; CKS1B; cyclin-dependent kinases regulatory subunit 1;

**Immunogen:**

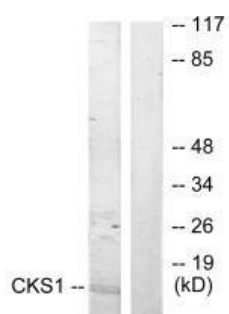
Synthesized peptide derived from N-terminal of human CKS1.

**Storage:**

Rabbit IgG in phosphate buffered saline (without Mg<sup>2+</sup> and Ca<sup>2+</sup>), pH 7.4, 150mM NaCl, 0.02% sodium azide and 50% glycerol.

## Product Images

---



Western blot analysis of extracts from Jurkat cells, treated with serum (20%, 15mins), using CKS1 antibody.

Immunofluorescence analysis of HeLa cells, using CKS1 antibody.

