

MZF1 Antibody



PACO23215

Product Information

Size:

100ul

Reactivity:

Human

Source:

Rabbit

Isotype:

IgG

Applications:

ELISA, WB, IHC

Recommended dilutions:

ELISA:1:2000-1:10000, WB:1:500-1:3000,
IHC:1:50-1:100

Protein Background:

Binds to target promoter DNA and functions as transcription regulator. Regulates transcription from the PADI1 and CDH2 promoter. May be one regulator of transcriptional events during hemopoietic development.

Gene ID:

MZF1

Uniprot

P28698

Synonyms:

Myeloid zinc finger 1; MZF-1; Zinc finger protein 42; Zinc finger and SCAN domain-containing protein 6; MZF1

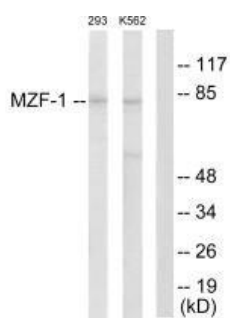
Immunogen:

Synthesized peptide derived from N-terminal of human MZF-1.

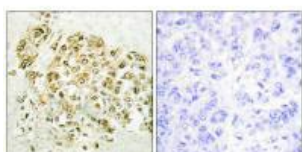
Storage:

Rabbit IgG in phosphate buffered saline (without Mg²⁺ and Ca²⁺), pH 7.4, 150mM NaCl, 0.02% sodium azide and 50% glycerol.

Product Images



Western blot analysis of extracts from 293 cells and K562 cells, using MZF-1 antibody.



Immunohistochemistry analysis of paraffin-embedded human breast carcinoma tissue using MZF-1 antibody.