

# CSRP1 Antibody



PACO23207

---

## Product Information

**Size:**

100ul

**Reactivity:**

Human, Mouse, Rat

**Source:**

Rabbit

**Isotype:**

IgG

**Applications:**

ELISA, WB, IHC

**Recommended dilutions:**

ELISA:1:2000-1:10000, WB:1:500-1:3000,  
IHC:1:50-1:100

**Protein Background:**

Could play a role in neuronal development.

**Gene ID:**

CSRP1

**Uniprot**

P21291

**Synonyms:**

CRP; CRP1; CSRP; CYRP; cysteine and glycine-rich 1

**Immunogen:**

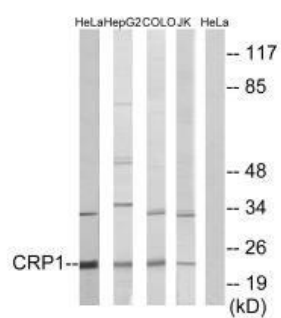
Synthesized peptide derived from internal of human CRP1.

**Storage:**

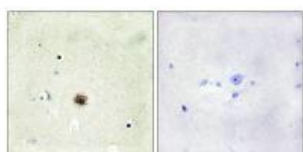
Rabbit IgG in phosphate buffered saline (without Mg<sup>2+</sup> and Ca<sup>2+</sup>), pH 7.4, 150mM NaCl, 0.02% sodium azide and 50% glycerol.

## Product Images

---



Western blot analysis of extracts from HeLa, HepG2 cells, COLO cells and Jurkat cells, using CRP1 antibody.



Immunohistochemistry analysis of paraffin-embedded human brain tissue using CRP1 antibody.