

# HKR1 Antibody



PACO23193

---

## Product Information

**Size:**

100ul

**Reactivity:**

Human

**Source:**

Rabbit

**Isotype:**

IgG

**Applications:**

ELISA, WB, IF

**Recommended dilutions:**

ELISA:1:2000-1:10000, WB:1:500-1:3000,  
IF:1:100-1:500

**Protein Background:**

May be involved in transcriptional regulation.

**Gene ID:**

HKR1

**Uniprot**

P10072

**Synonyms:**

Krueppel-related zinc finger protein 1; Protein HKR1; HKR1;

**Immunogen:**

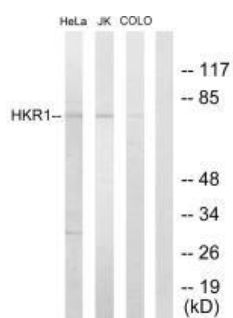
Synthesized peptide derived from internal of human HKR1.

**Storage:**

Rabbit IgG in phosphate buffered saline (without Mg<sup>2+</sup> and Ca<sup>2+</sup>), pH 7.4, 150mM NaCl, 0.02% sodium azide and 50% glycerol.

## Product Images

---



Western blot analysis of extracts from HeLa cells, Jurkat cells and COLO205 cells, using HKR1 antibody.

Immunofluorescence analysis of HUVEC cells, using HKR1 antibody.

