

# MAP4K4 Antibody



PACO23183

---

## Product Information

**Size:**

100ul

**Reactivity:**

Human, Mouse

**Source:**

Rabbit

**Isotype:**

IgG

**Applications:**

ELISA, WB, IF

**Recommended dilutions:**

ELISA:1:2000-1:10000, WB:1:500-1:3000,  
IF:1:100-1:500

**Protein Background:**

Serine/threonine kinase that may play a role in the response to environmental stress and cytokines such as TNF-alpha. Appears to act upstream of the JUN N-terminal pathway. Phosphorylates SMAD1 on Thr-322.

**Gene ID:**

MAP4K4

**Uniprot**

O95819

**Synonyms:**

EC 2.7.11.1; HPK/GCK-like kinase HGK; M4K4; MAP4K4; MAPK/ERK kinase kinase kinase 4

**Immunogen:**

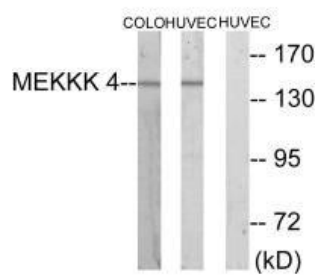
Synthesized peptide derived from internal of human MEKKK 4.

**Storage:**

Rabbit IgG in phosphate buffered saline (without Mg<sup>2+</sup> and Ca<sup>2+</sup>), pH 7.4, 150mM NaCl, 0.02% sodium azide and 50% glycerol.

## Product Images

---



Western blot analysis of extracts from COLO cells and HUVEC cells, using MEK4 antibody.

Immunofluorescence analysis of A549 cells, using MEK4 antibody.

