

# TUBB3 Antibody



PACO23151

---

## Product Information

**Size:**

100ul

**Reactivity:**

Human, Mouse, Rat

**Source:**

Rabbit

**Isotype:**

IgG

**Applications:**

ELISA, WB, IHC

**Recommended dilutions:**

ELISA:1:2000-1:10000, WB:1:500-1:3000,  
IHC:1:50-1:100

**Protein Background:**

Tubulin is the major constituent of microtubules. It binds two moles of GTP, one at an exchangeable site on the beta chain and one at a non-exchangeable site on the alpha chain. TUBB3 plays a critical role in proper axon guidance and maintenance.

**Gene ID:**

TUBB3

**Uniprot**

Q13509

**Synonyms:**

TBB2; TBB5; TUBB; TUBB5; Tubulin beta chain

**Immunogen:**

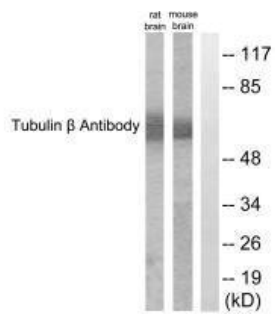
Synthesized peptide derived from C-terminal of human Tubulin beta.

**Storage:**

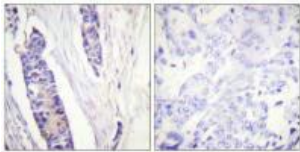
Rabbit IgG in phosphate buffered saline (without Mg<sup>2+</sup> and Ca<sup>2+</sup>), pH 7.4, 150mM NaCl, 0.02% sodium azide and 50% glycerol.

## Product Images

---



Western blot analysis of extracts from rat cells and mouse brain cells, using Tubulin beta antibody.



Immunohistochemistry analysis of paraffin-embedded human breast carcinoma tissue, using Tubulin beta antibody.