

SENP7 Antibody



PACO23149

Product Information

Size:

100ul

Reactivity:

Human, Mouse

Source:

Rabbit

Isotype:

IgG

Applications:

ELISA, WB, IHC

Recommended dilutions:

ELISA:1:2000-1:10000, WB:1:500-1:3000,
IHC:1:50-1:100

Protein Background:

Protease that deconjugates SUMO2 and SUMO3 from targeted proteins, but not SUMO1. Catalyzes the deconjugation of poly-SUMO2 and poly-SUMO3 chains. Has very low efficiency in processing full-length SUMO proteins to their mature forms.

Gene ID:

SENP7

Uniprot

Q9BQF6

Synonyms:

Sentrin-specific protease 7; EC 3.4.22. -; Sentrin/SUMO-specific protease SENP7; SUMO-1-specific protease 2; SUMO1/sentrin specific protease 7

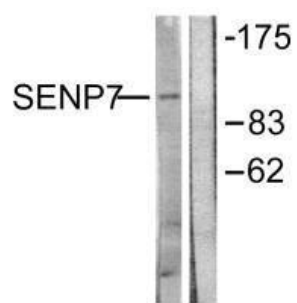
Immunogen:

Synthesized peptide derived from Internal of human SENP7.

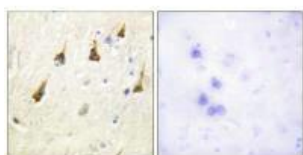
Storage:

Rabbit IgG in phosphate buffered saline (without Mg²⁺ and Ca²⁺), pH 7.4, 150mM NaCl, 0.02% sodium azide and 50% glycerol.

Product Images



Western blot analysis of extracts from HuvEc cells, using SENP7 antibody.



Immunohistochemistry analysis of paraffin-embedded human brain tissue using SENP7 antibody.