

PACO23148

Product Information

Size:

100ul

Reactivity:

Human, Mouse

Source:

Rabbit

Isotype:

IgG

Applications:

ELISA, WB, IHC

Recommended dilutions:

ELISA:1:2000-1:10000, WB:1:500-1:3000,
IHC:1:50-1:100

Protein Background:

Protease that catalyzes two essential functions in the SUMO pathway: processing of full-length SUMO3 to its mature form and deconjugation of SUMO2 and SUMO3 from targeted proteins. Has weak proteolytic activity against full-length SUMO1 or SUMO1 conjugates. Required for cell division.

Gene ID:

SENP5

Uniprot

Q96HI0

Synonyms:

EC 3.4.22. -; SUMO1/sentrin specific peptidase 5;

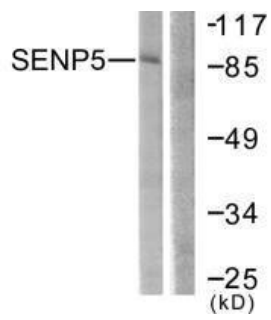
Immunogen:

Synthesized peptide derived from Internal of human SENP5.

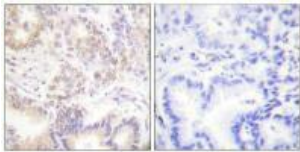
Storage:

Rabbit IgG in phosphate buffered saline (without Mg²⁺ and Ca²⁺), pH 7.4, 150mM NaCl, 0.02% sodium azide and 50% glycerol.

Product Images



Western blot analysis of extracts from COS7 cells, using SENP5 antibody.



Immunohistochemistry analysis of paraffin-embedded human lung carcinoma tissue using SENP5 antibody.