

PRPH Antibody



PACO23131

Product Information

Size:

100ul

Reactivity:

Human, Rat

Source:

Rabbit

Isotype:

IgG

Applications:

ELISA, WB, IHC

Recommended dilutions:

ELISA:1:2000-1:10000, WB:1:500-1:3000,
IHC:1:50-1:100

Protein Background:

Gene ID:

PRPH

Uniprot

P41219

Synonyms:

PERI; PRPH;

Immunogen:

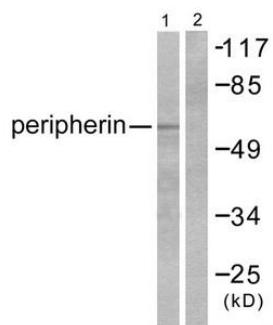
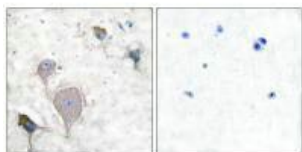
Synthesized peptide derived from human Peripherin.

Storage:

Rabbit IgG in phosphate buffered saline (without Mg²⁺ and Ca²⁺), pH 7.4, 150mM NaCl, 0.02% sodium azide and 50% glycerol.

Product Images

Immunohistochemical analysis of paraffin-embedded human brain tissue using Peripherin antibody.



Western blot analysis of extracts from HepG2 cells, using Peripherin antibody(Lane 1) and the same antibody preincubated with blocking peptide (Lane2).