

MMP2 Antibody



PACO23125

Product Information

Size:

100ul

Reactivity:

Human, Mouse, Rat

Source:

Rabbit

Isotype:

IgG

Applications:

ELISA, WB

Recommended dilutions:

ELISA:1:2000-1:10000, WB:1:500-1:3000

Protein Background:

Gene ID:

MMP2

Uniprot

P08253

Synonyms:

CLG4A; COLLAGENASE TYPE IV; 72-KD; COLLAGENASE TYPE IV-A; GELATINASE

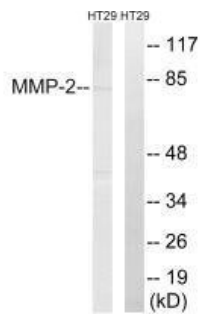
Immunogen:

Synthesized peptide derived from human MMP-2.

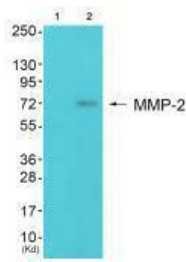
Storage:

Rabbit IgG in phosphate buffered saline (without Mg²⁺ and Ca²⁺), pH 7.4, 150mM NaCl, 0.02% sodium azide and 50% glycerol.

Product Images



Western blot analysis of extracts from HT-29 cells, using MMP-2 antibody.



Western blot analysis of extracts from 3T3 cells (Lane 2), using MMP-2 antibody. The lane on the left is treated with synthesized peptide.