

Product Information

Size:

100ul

Reactivity:

Human, Mouse

Source:

Rabbit

Isotype:

IgG

Applications:

ELISA, WB, IHC

Recommended dilutions:

ELISA:1:2000-1:10000, WB:1:500-1:3000,
IHC:1:50-1:100

Protein Background:

Endopeptidase that degrades various components of the extracellular matrix, such as aggrecan and cartilage oligomeric matrix protein (comp), during development, haemostasis and pathological conditions (arthritic disease). May also play a role in neovascularization or angiogenesis. Hydrolyzes collagen type IV, laminin, nidogen, nascin-C isoform, fibronectin, and type I gelatin.

Gene ID:

MMP19

Uniprot

Q99542

Synonyms:

MATRIX METALLOPROTEINASE 18; FORMERLY; MMP18; FORMERLY; matrix metalloproteinase 19

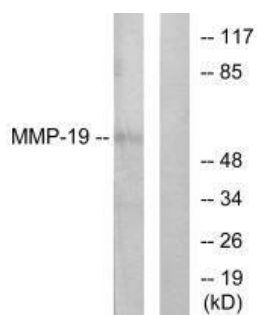
Immunogen:

Synthesized peptide derived from human MMP-19.

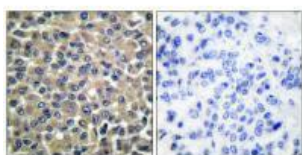
Storage:

Rabbit IgG in phosphate buffered saline (without Mg²⁺ and Ca²⁺), pH 7.4, 150mM NaCl, 0.02% sodium azide and 50% glycerol.

Product Images



Western blot analysis of extracts from HuvEc cells, using MMP-19 antibody.



Immunohistochemical analysis of paraffin-embedded human breast carcinoma tissue using MMP-19 antibody.