

PACO23108

Product Information

Size:

100ul

Reactivity:

Human, Mouse, Rat

Source:

Rabbit

Isotype:

IgG

Applications:

ELISA, WB, IF

Recommended dilutions:

ELISA:1:2000-1:10000, WB:1:500-1:3000,
IF:1:100-1:500

Protein Background:**Gene ID:**

GCG

Uniprot

P01275

Synonyms:

Glicentin; Glicentin-related polypeptide; Oxyntomodulin; Glucagon-like peptide 1(GLP-1); Glucagon-like peptide 1(7-37)

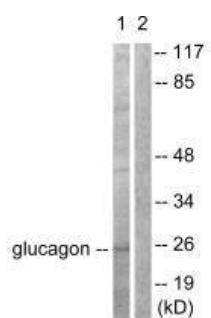
Immunogen:

Synthesized peptide derived from human glucagon.

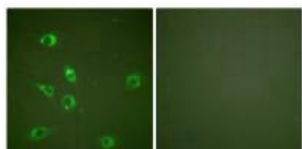
Storage:

Rabbit IgG in phosphate buffered saline (without Mg²⁺ and Ca²⁺), pH 7.4, 150mM NaCl, 0.02% sodium azide and 50% glycerol.

Product Images



Western blot analysis of extracts from COS7 cells, using Glucagon antibody.



Immunofluorescence analysis of NIH/3T3 cells, using Glucagon antibody.