

PACO23090

Product Information

Size:

100ul

Reactivity:

Human, Mouse, Rat

Source:

Rabbit

Isotype:

IgG

Applications:

ELISA, WB, IHC

Recommended dilutions:

ELISA:1:2000-1:10000, WB:1:500-1:3000,
IHC:1:50-1:100

Protein Background:

Actins are highly conserved proteins that are involved in various types of cell motility and are ubiquitously expressed in all eukaryotic cells.

Gene ID:

ACTB

Uniprot

P60709

Synonyms:

ACT; Actin; cytoplasmic 1;

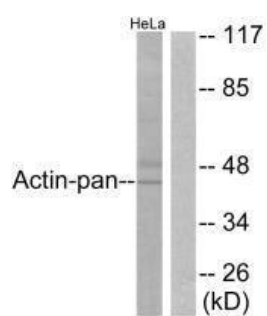
Immunogen:

Synthesized peptide derived from human Actin.

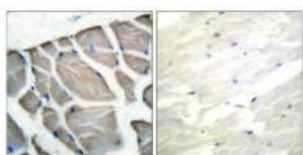
Storage:

Rabbit IgG in phosphate buffered saline (without Mg²⁺ and Ca²⁺), pH 7.4, 150mM NaCl, 0.02% sodium azide and 50% glycerol.

Product Images



Western blot analysis of extracts from HeLa cells, using Actin-pan antibody.



Immunohistochemical analysis of paraffin-embedded human skeletal muscle tissue using Actin-pan antibody.