

# DPYSL2 (Ab-522) Antibody



PACO23088

---

## Product Information

**Size:**

100ul

**Reactivity:**

Human, Mouse, Rat

**Source:**

Rabbit

**Isotype:**

IgG

**Applications:**

ELISA, WB

**Recommended dilutions:**

ELISA:1:2000-1:10000, WB:1:500-1:3000

**Protein Background:**

Plays a role in neuronal development and polarity, as well as in axon growth and guidance, neuronal growth cone collapse and cell migration. Necessary for signaling by class 3 semaphorins and subsequent remodeling of the cytoskeleton. May play a role in endocytosis.

**Gene ID:**

DPYSL2

**Uniprot**

Q16555

**Synonyms:**

Collapsin response mediator protein 2; collapsin response mediator protein hCRMP-2; CRMP-2; CRMP2; DHPRP2

**Immunogen:**

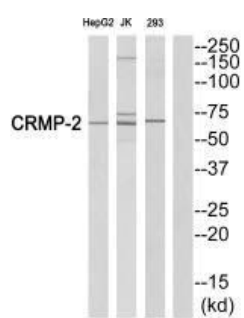
Synthesized peptide derived from C-terminal of human DPYSL2.

**Storage:**

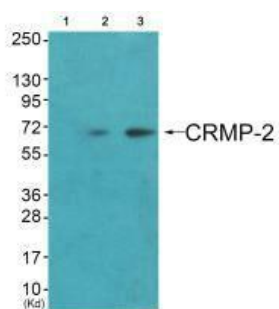
Rabbit IgG in phosphate buffered saline (without Mg<sup>2+</sup> and Ca<sup>2+</sup>), pH 7.4, 150mM NaCl, 0.02% sodium azide and 50% glycerol.

## Product Images

---



Western blot analysis of extracts from HepG2 cells, Jurkat cells and 293 cells, using CRMP-2 (Ab-522) antibody.



Western blot analysis of extracts from HuvEc cells (Lane 2) and JK cells (Lane 3), using CRMP-2 (Ab-522) antibody. The lane on the left is treated with synthesized peptide.