

ATF2 (Ab-472) Antibody



PACO23077

Product Information

Size:

100ul

Reactivity:

Human, Mouse

Source:

Rabbit

Isotype:

IgG

Applications:

ELISA, WB

Recommended dilutions:

ELISA:1:2000-1:10000, WB:1:500-1:3000

Protein Background:

Gene ID:

ATF2

Uniprot

P15336

Synonyms:

Activating 2; ATF2; cAMP response element binding protein CRE- BP1; CREB2; CREBP1

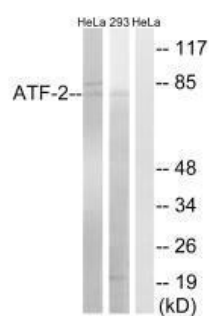
Immunogen:

Synthesized non-phosphopeptide derived from human ATF-2 around the phosphorylation site of serine 472 (A-L-S(p)-Q-I).

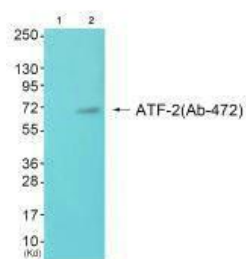
Storage:

Rabbit IgG in phosphate buffered saline (without Mg²⁺ and Ca²⁺), pH 7.4, 150mM NaCl, 0.02% sodium azide and 50% glycerol.

Product Images



Western blot analysis of extracts from HeLa cells and 293 cells, using ATF-2 (Ab-472) antibody.



Western blot analysis of extracts from JK cells (Lane 2), using ATF-2 (Ab-472) antibody. The lane on the left is treated with synthesized peptide.