

ICK (Ab-159) Antibody



PACO23062

Product Information

Size:

100ul

Reactivity:

Human, Mouse

Source:

Rabbit

Isotype:

IgG

Applications:

ELISA, WB

Recommended dilutions:

ELISA:1:2000-1:10000, WB:1:500-1:3000

Protein Background:

May play a key role in the development of multiple organ systems and particularly in cardiac development By similarity.

Gene ID:

ICK

Uniprot

Q9UPZ9

Synonyms:

EC 2.7.11.22; hICK; ICK; Intestinal cell kinase; KIAA0936

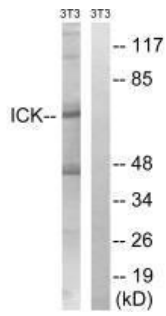
Immunogen:

Synthesized non-phosphopeptide derived from human ICK around the phosphorylation site of tyrosine 159 (T-D-Y(p)-V-S).

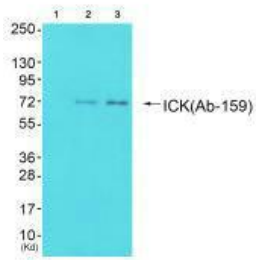
Storage:

Rabbit IgG in phosphate buffered saline (without Mg²⁺ and Ca²⁺), pH 7.4, 150mM NaCl, 0.02% sodium azide and 50% glycerol.

Product Images



Western blot analysis of extracts from 3T3 cells, treated with PBS (10uM, 60mins), using ICK (Ab-159) antibody.



Western blot analysis of extracts from 293 cells (Lane 2) and cos-7 cells (Lane 3), using ICK (Ab-159) antibody. The lane on the left is treated with synthesized peptide.