

# IL2RB (Ab-364) Antibody



PACO23040

---

## Product Information

**Size:**

100ul

**Reactivity:**

Human, Mouse

**Source:**

Rabbit

**Isotype:**

IgG

**Applications:**

ELISA, WB, IHC, IF

**Recommended dilutions:**

ELISA:1:2000-1:10000, WB:1:500-1:3000,  
IHC:1:50-1:200, IF:1:100-1:200

**Protein Background:**

Receptor for interleukin-2. This beta subunit is involved in receptor mediated endocytosis and transduces the mitogenic signals of IL2.

**Gene ID:**

IL2RB

**Uniprot**

P14784

**Synonyms:**

CD122 antigen; High affinity IL-2 receptor beta subunit; IL-2 receptor; IL-2R beta; Interleukin-2 receptor beta chain precursor

**Immunogen:**

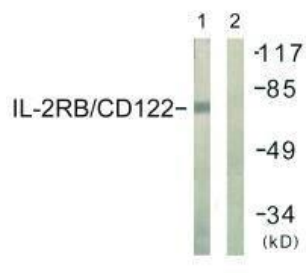
Synthesized non-phosphopeptide derived from human IL-2R beta /CD122 around the phosphorylation site of tyrosine 364 (Q-G-Y(p)-F-F).

**Storage:**

Rabbit IgG in phosphate buffered saline (without Mg<sup>2+</sup> and Ca<sup>2+</sup>), pH 7.4, 150mM NaCl, 0.02% sodium azide and 50% glycerol.

## Product Images

---



Western blot analysis of extracts from COS7 cells, using IL-2R beta /CD122 (Ab-364) antibody.

Immunohistochemistry analysis of paraffin-embedded human lung carcinoma tissue using IL-2R beta /CD122 (Ab-364) antibody.

